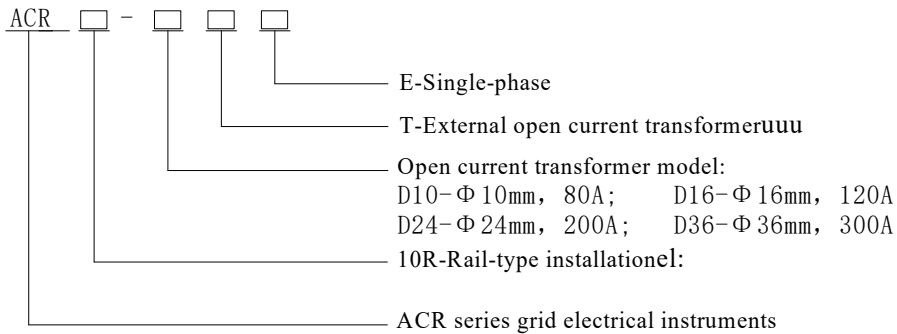


# D317 Rail-type Multifunction Electrical Instrument with External Split Core Current Transformer Use and Installation Manual V1.0

## 1. Overview

The rail-type multifunction electrical instrument with external Rogowski coil and split-core current transformer is applicable for the energy-saving reconstruction project in high energy consumption industries including the smelting, iron and steel, welding and semi-conductor industry. It is also suitable for applications such as the power monitoring of grid-connected cabinet for distributed photovoltaic power cabinet and energy demand management.

## 2. Product Specifications



## 3. Product Function

Model		ACR10R-DxxTE
Function		
Measurement Parameters	Single-phase current	■
	Single-phase voltage	■
	Single-phase (active power, reactive power, power factor )	■
	Three-phase (active energy, reactive energy)	■

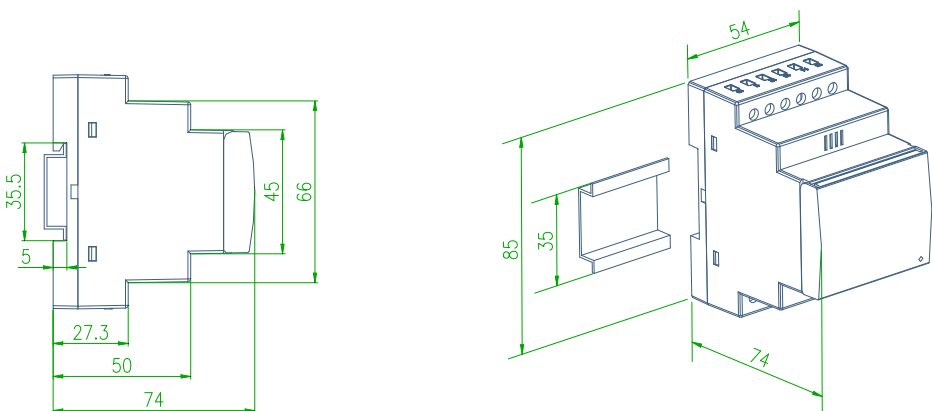
Note: 1. “■” refers to standard function, the standard configuration for above instruments is 1 channel RS485 communication.

## 4. Technical Parameters

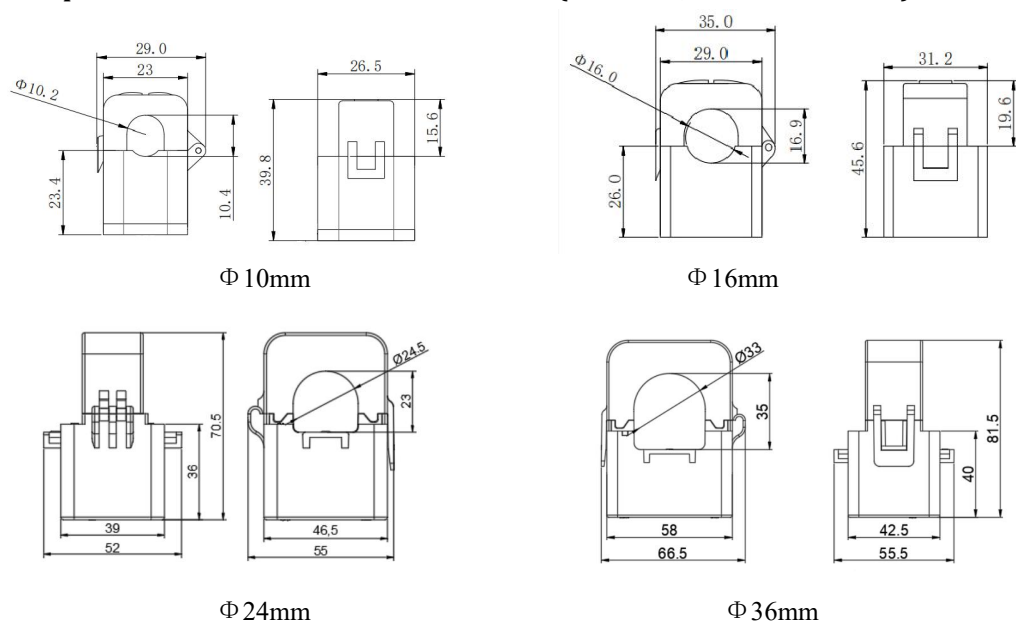
Technical parameters		Indicators
Input	Grid	Single-phase
	Frequency	45~65Hz
	Voltage	Rated voltage: AC 230V
		Overload: 1.2 times the rated voltage(continuous); 2 times the rated voltage lasting for 1 second
		Power consumption: less then 0.2VA
	Current	Rated current: 10A, 20A, 40A, 80A, 120A, 200A etc. (for details see product specifications)
		Overload: 1.2 times the rated current(continuous);10 times the rated current lasting for 1 second
		Power consumption: less then 0.2VA
Output	Communication	RS485 interface, Modbus-RTU
	Display	LCD
Measurement precision		Voltage: 0.2 level, current, power Active energy: 0.5 level,0.01Hz frequency, Reactive energy: 1 level
Power supply		AC85~265V or DC100~350V; power consumption ≤10VA
Safety	Power frequency withstand voltage	AC2kV 1 min between power supply // current input//voltage input and communication AC2kV 1 min between each pair of combinations among power supply, urrent input and voltage input.
	Insulating resistor	housing >100MΩ
Environment		Working temperature: -10℃~+55℃;storage temperature: -20℃~+70℃ Relative humidity:5%~95%, non-condensing; altitude:≤2500m

## 5. Installation

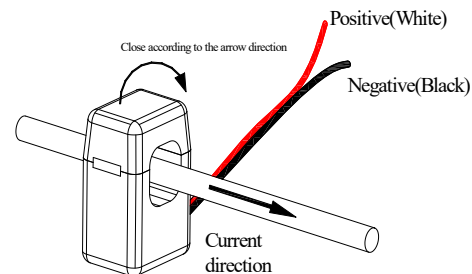
### 5.1 Overall and Installation Dimensions (Unit: mm, Tolerance: $\pm 1$ mm)



### 5.2 Open Current Transformer's Dimension (Unit: mm, Tolerance: $\pm 1$ mm)



### 5.3 Installation Method

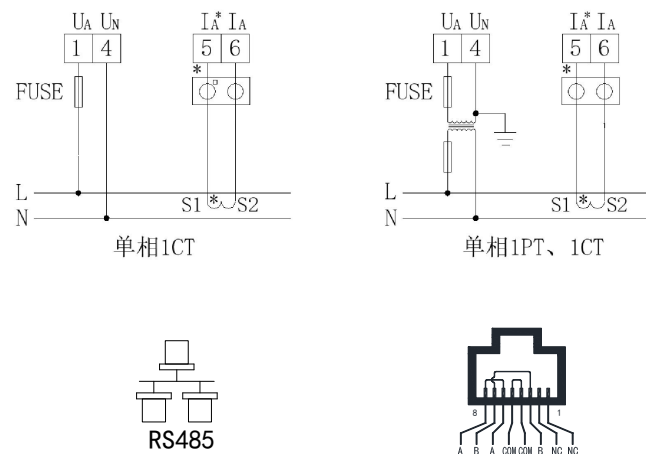


#### Installation Method of the Open Current Transformer Close

Note: When the current transformer is 200A or 300A, the positive wire is red and the negative wire is yellow.

### 5.4 Connection Mode

(Note: The connection diagram on the instrument housing shall prevail in case of any discrepancies with it)



## 6. Communication

TEL./Fax: 0086-510-86179970

Web-site: [www.jsacrel.com](http://www.jsacrel.com)